

---

**Director's Report on Developmental Progress Assessment**

**Date of Visit:** 01-12-2025

**Child's Name:** Hossam Mohammad Albalushi

**Date of Birth:** 2016-03-20

**Gender:** Male

**Guardian:** Mohammad

---

**Overview:**

Hossam visited our center for a developmental progress assessment. The evaluation shows **information processing delays and global developmental delays**, which have led to **acquired features of autism** and **intellectual developmental delay features**.

The child has **positive MRI findings** and **biochemical analyses** done previously at external medical facilities, as reported by the neurologist and medical doctors and presented on the day of assessment. These findings indicate **brain developmental delays with a strong biological component**.

Given these combined neurological, developmental, and biological indicators, **further analysis is recommended** to better understand the underlying causes and support targeted intervention.

---

**Recommended Plan**

**1) Development Protocol for Information Processing**

- Continue the development protocol for **4 months**, followed by a full reassessment (preferably in person).
  - Reevaluate the plan and establish a developmental baseline.
  - Continue with the intervention plan according to progress.
- 

**2) Recommended Tests (Through Neurazon Canada)**

**Note:**

These analyses are **external, optional**, and **not conducted directly through our center**. They are recommended based on research and Neurazon's guidance.

---

**3) Recommended Therapy**

- **Plasticity Rehabilitation Therapy**
    - Intensive program
    - Recommended to begin **in later stages** after protocol progression
- 

**Notes on External Testing**

All recommended analyses are conducted through **Neurazon (Canada)**, a bioinformatics company partnered with certified international laboratories. These tests are **suggestions**, not

obligatory. They are **external** and **not performed directly through EICADD Center**. Please refer to the Neurazon plan for additional details.

#### Disclaimer

This assessment is **not a final diagnosis**, but a developmental evaluation based on current findings. The child is **capable of improvement**, and results may change with intervention.

This report is **valid for 4 months** from the date of assessment.

**EICADD Center Director**

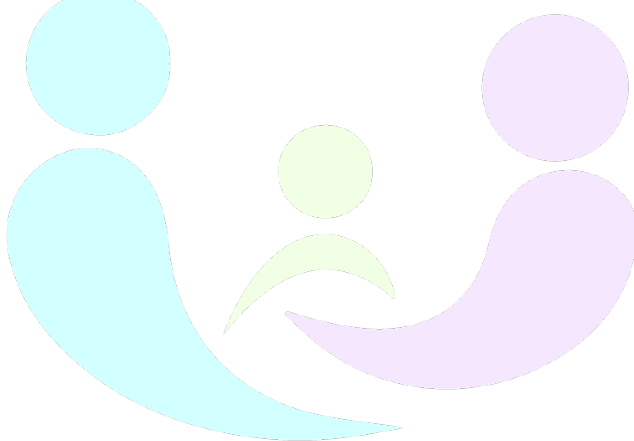
#### Centers' Leading Staff:

**Speech Therapist:** Ms. Amira Alomari

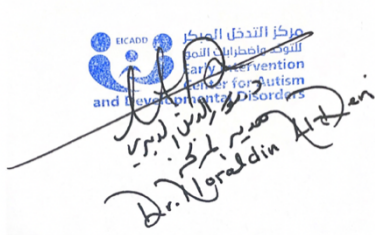
**Occupational Therapist:** Ms. Malak Jaber

**Psychologist and behaviour therapist (Ajman):** Ms. Asmaa Alshanawi

**EICADD Center Director**



**EICADD**



Dr. Noraldin Al-Dani